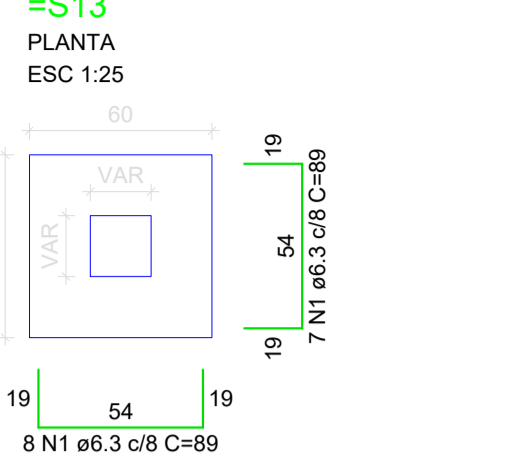
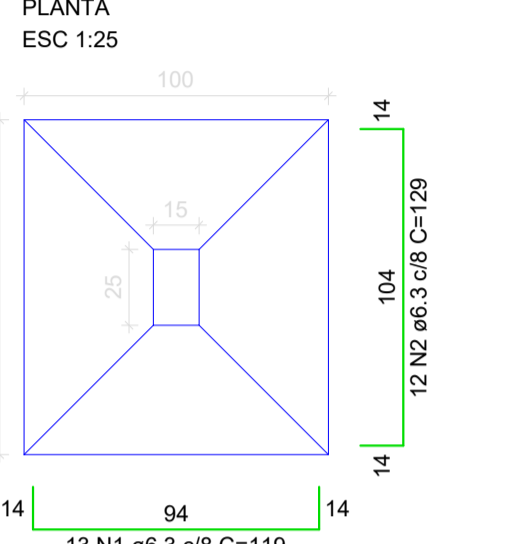


S1=S2=S3=S4=S5=S6=S7=S8=S9=S10=S11=S12=S13



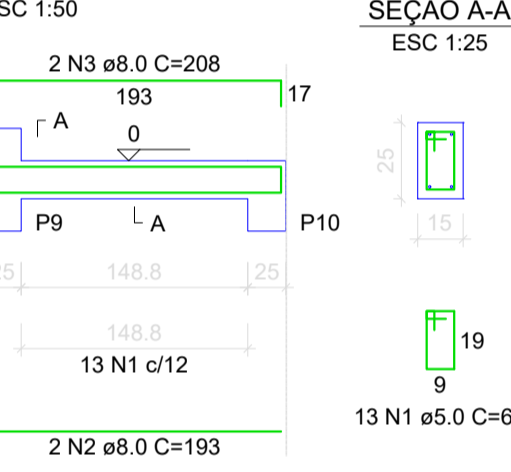
Solo com capacidade de suporte > 1.50 kgf/cm²
Solo compactado sobre a sapata
peso específico > 1600.00 kg/m³

S14

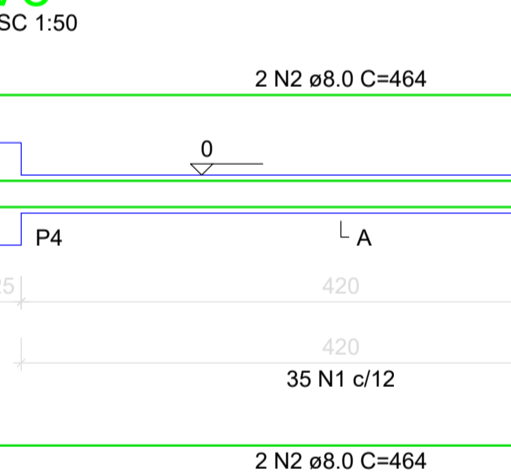


Solo com capacidade de suporte > 1.50 kgf/cm²
Solo compactado sobre a sapata
peso específico > 1600.00 kg/m³

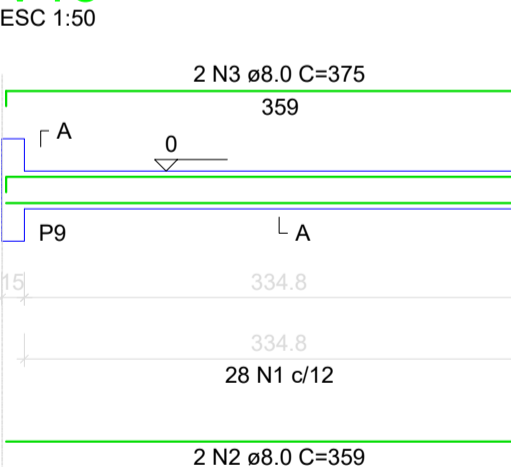
V3



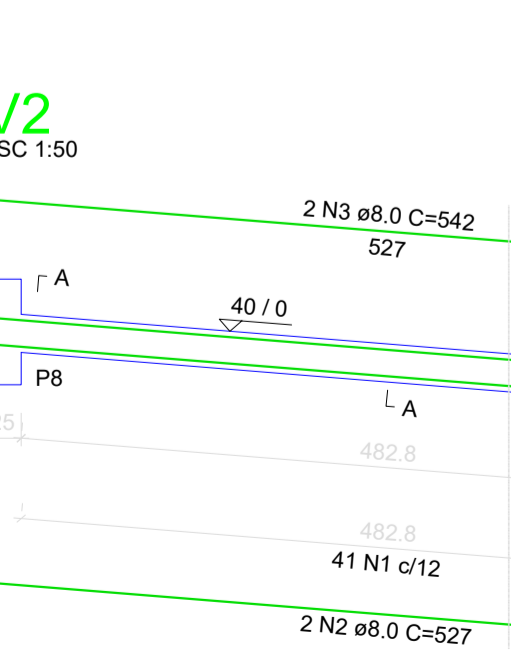
V8



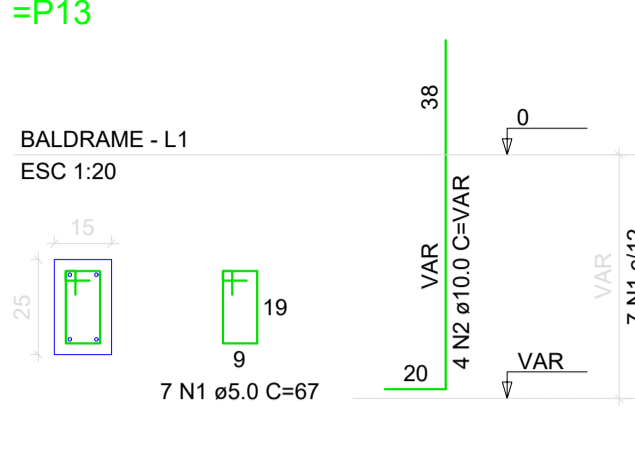
V13



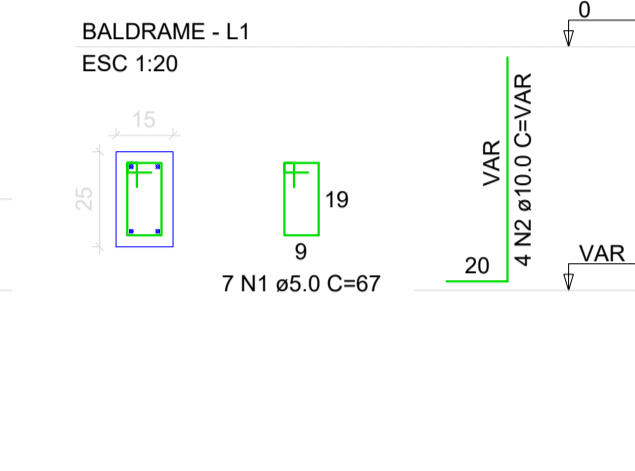
V2



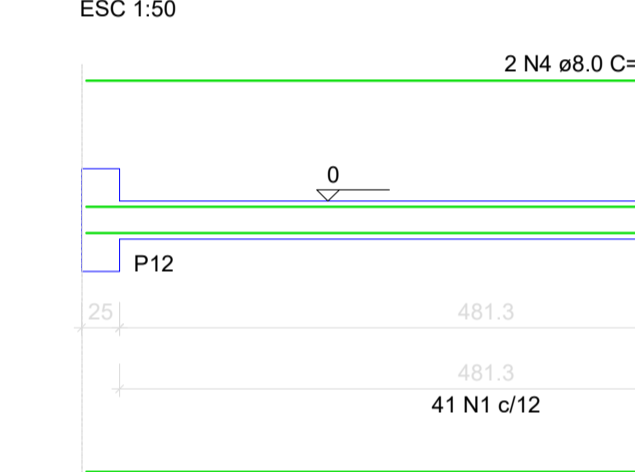
P1=P2=P3=P4=P6=P8=P9=P11=P12=P13



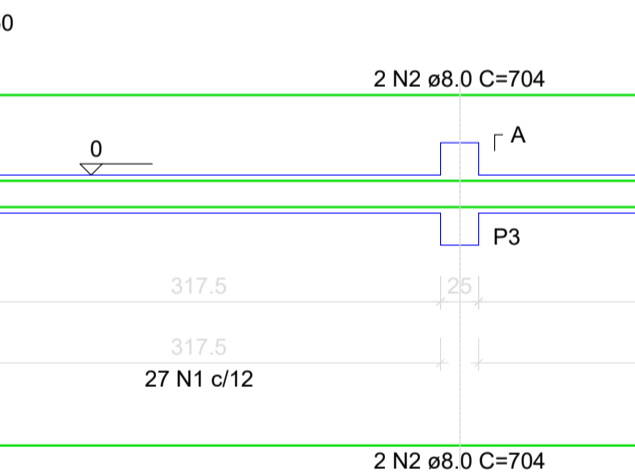
P14



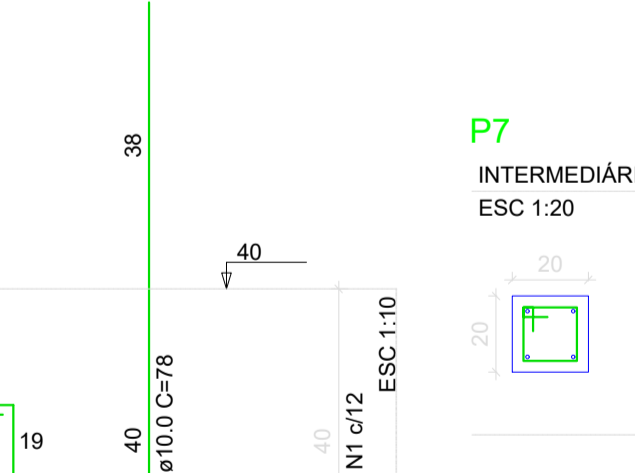
V4



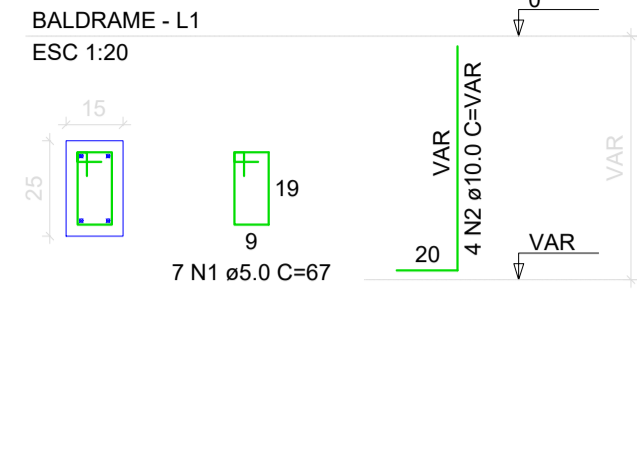
V9



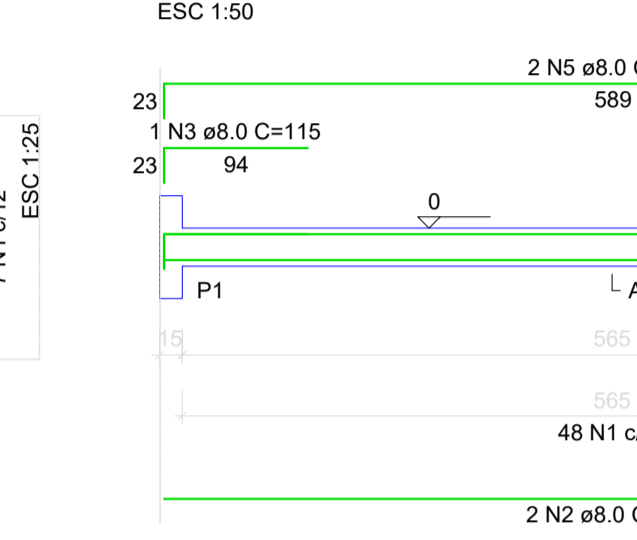
P1=P2=P3=P4=P6=P8=P9=P11=P12



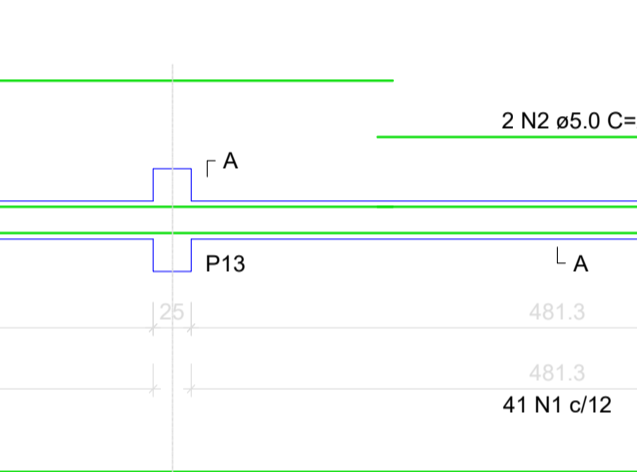
P5=P10



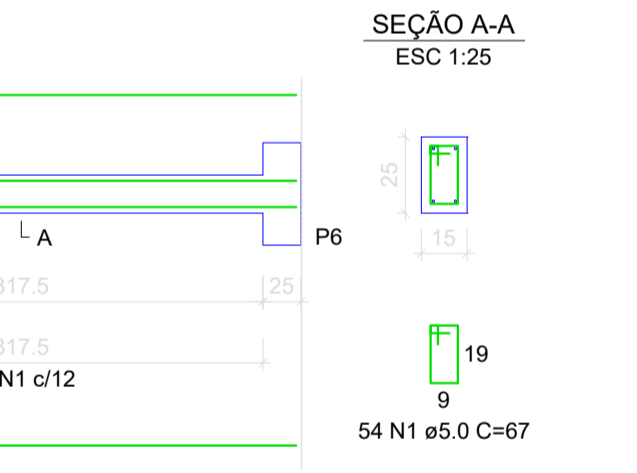
V1



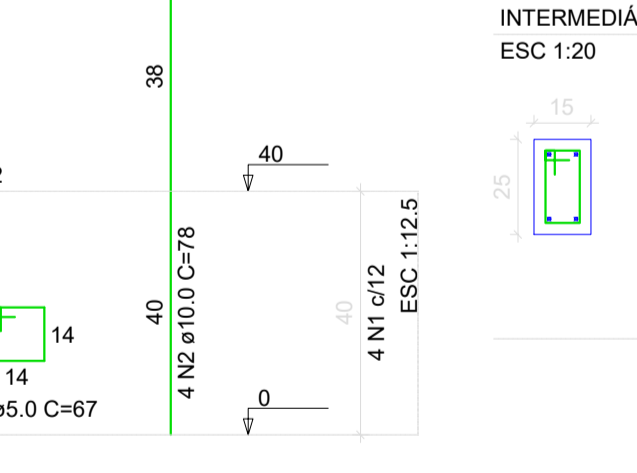
V6



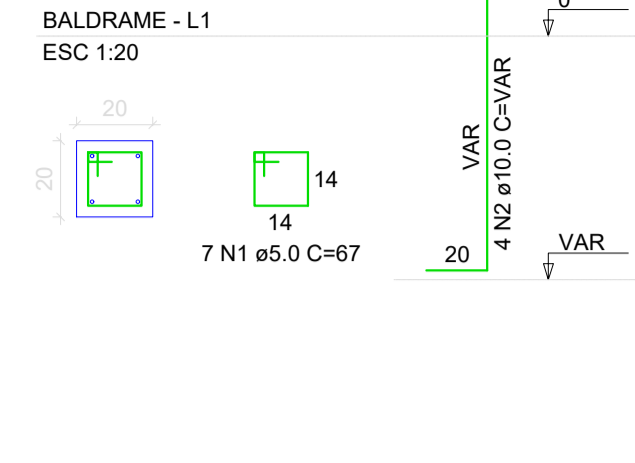
V10



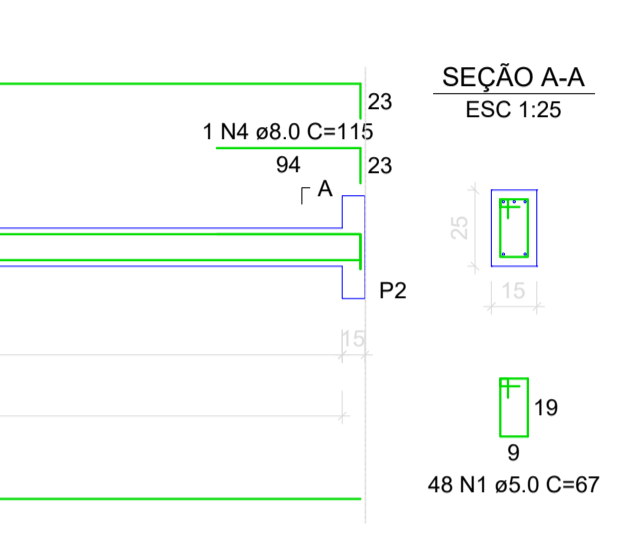
P13



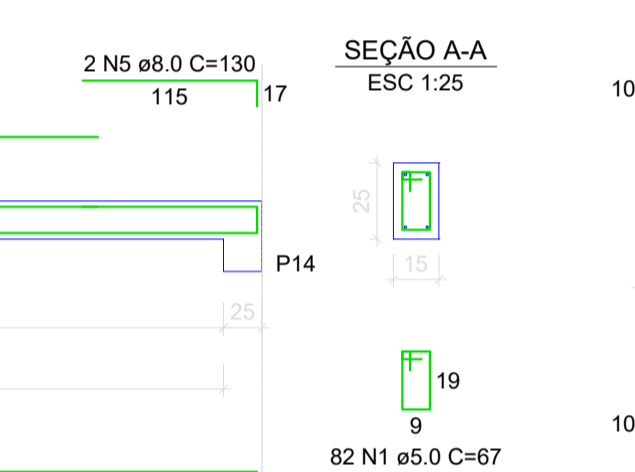
P7



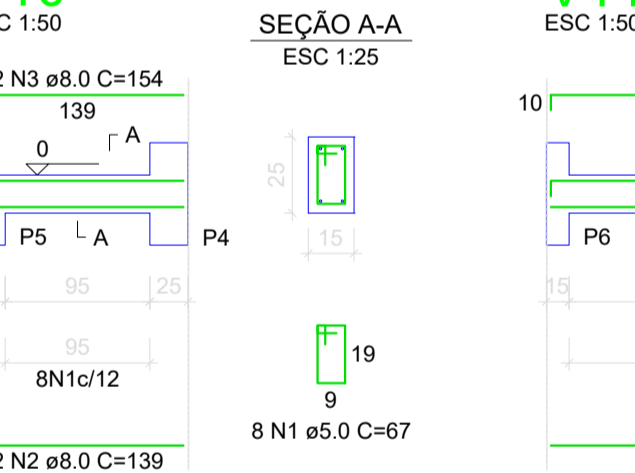
V2



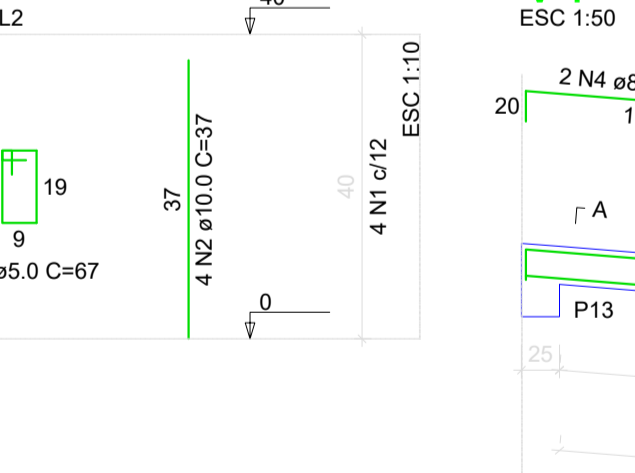
V6



V11



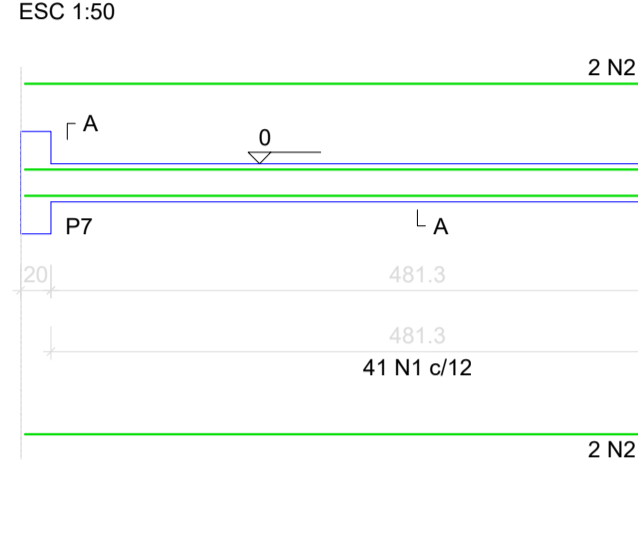
V1



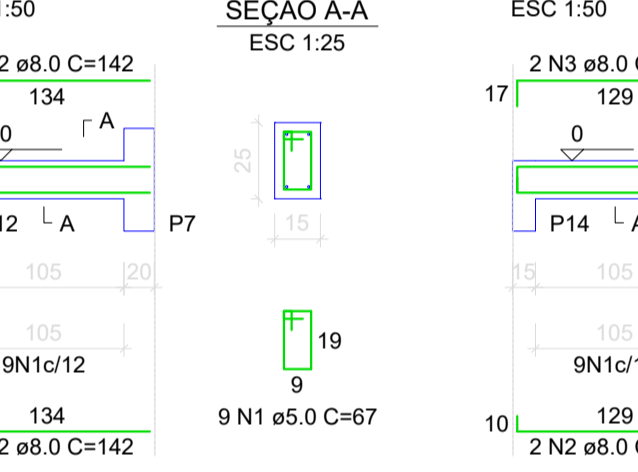
P7



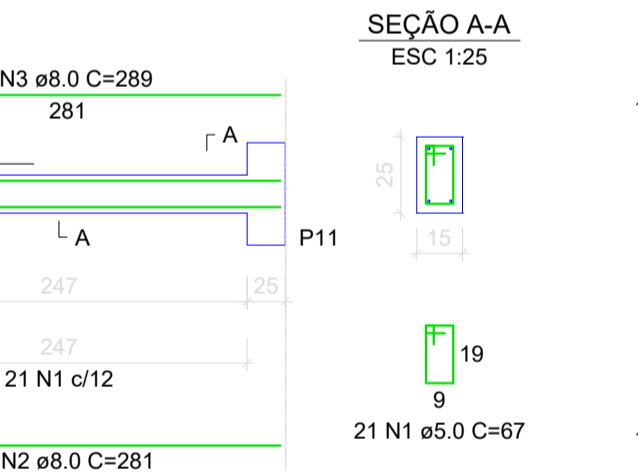
V2



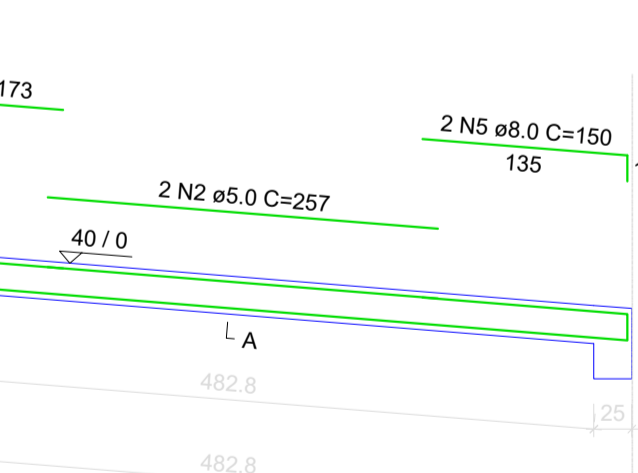
V6



V11



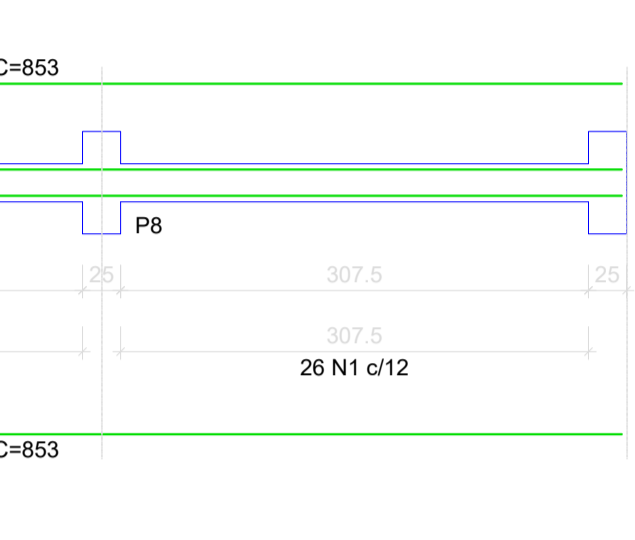
V1



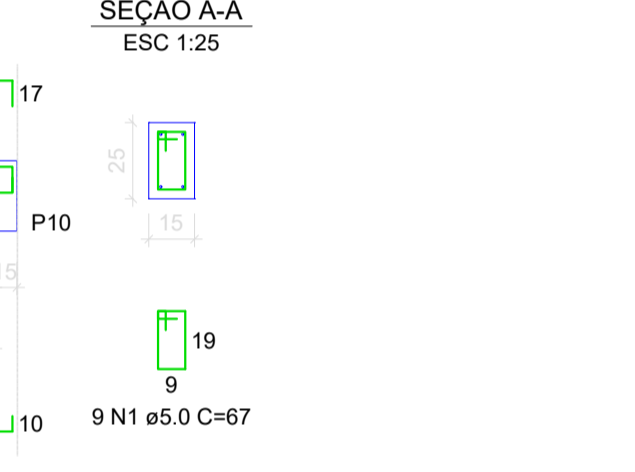
P7



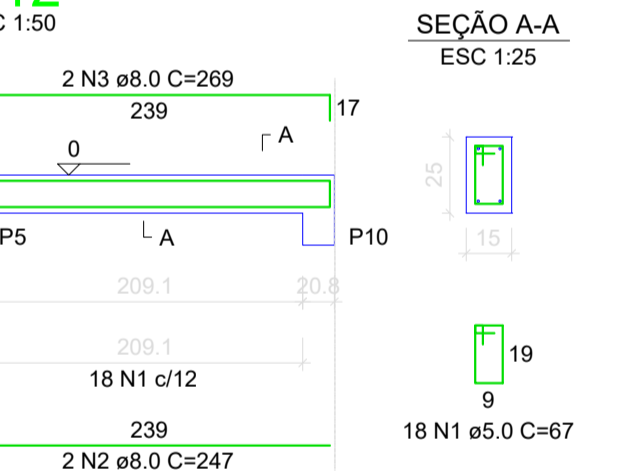
V2



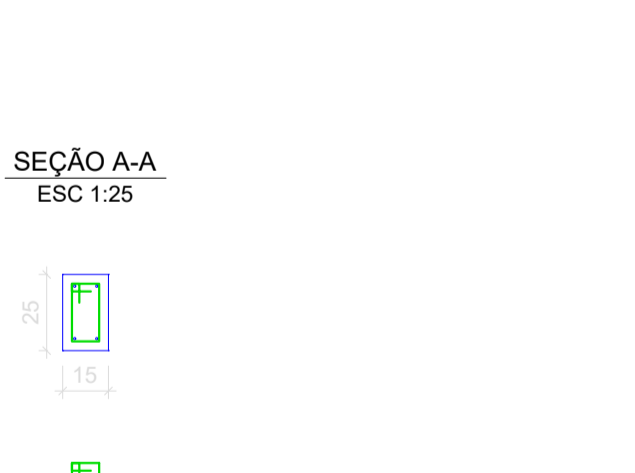
V6



V11



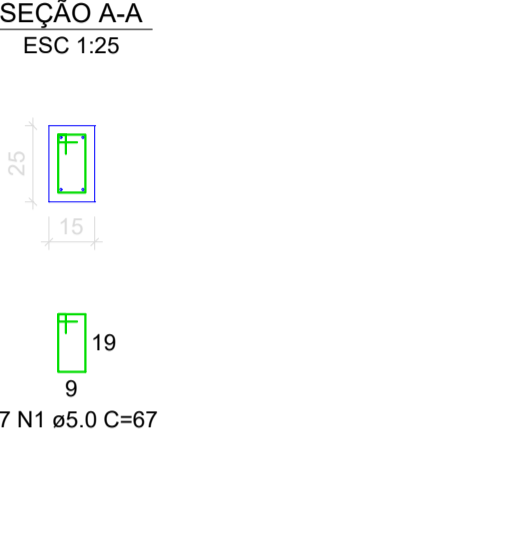
V1



SEÇÃO A-A



SEÇÃO A-A



SEÇÃO A-A



SEÇÃO A-A



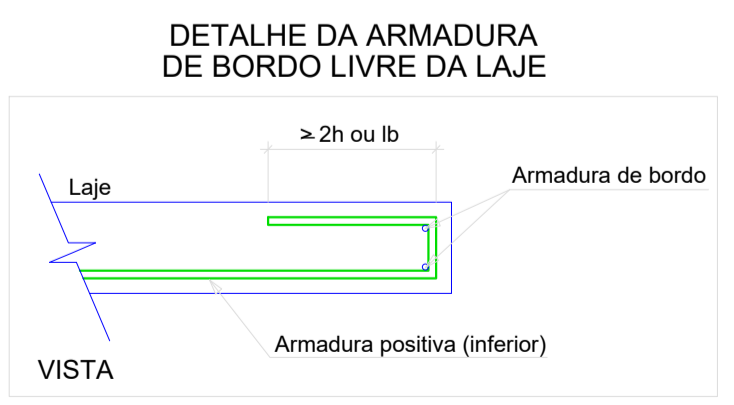
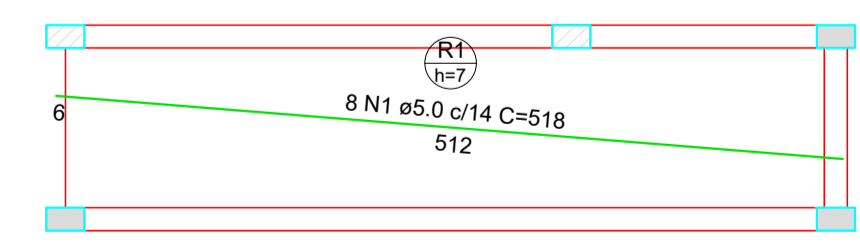
SEÇÃO A-A



RELAÇÃO DO AÇO						
ELEMENTO	AÇO	N	DIAM (mm)	QUANT	C.UNIT (cm)	C.TOTAL (cm)
Positivos X-L2	CA60	1	5.0	8	518	4144
9xP1-L2	CA60	1	5.0	36	67	2412
	CA60	2	10.0	36	78	2808
10xP1-L1	CA60	1	5.0	70	67	4690
	CA60	2	10.0	40	VAR	VAR
2xP5-L1	CA60	1	5.0	14	67	938
	CA60	2	10.0	8	VAR	VAR
P7-L2	CA60	1	5.0	4	67	268
	CA60	2	10.0	4	67	268
P7-L1	CA60	1	5.0	7	67	469
	CA60	2	10.0	4	VAR	VAR
P13-L2	CA60	1	5.0	4	67	268
	CA60	2	10.0	4	67	268
P14-L1	CA60	1	5.0	7	67	469
	CA60	2	10.0	4	VAR	VAR
13xS7-L1	CA60	1	6.3	195	89	17355
	CA60	1	6.3	13	119	1547
S14-L1	CA60	2	6.3	12	129	1548
	CA60	1	5.0	41	67	2747
V1-L2	CA60	2	5.0	2	257	514
	CA60	3	8.0	2	527	1054
	CA60	4	8.0	2	173	346
	CA60	5	8.0	2	150	300
V1-L1	CA60	1	5.0	48	67	3216
	CA60	2	8.0	2	589	1178
	CA60	3	8.0	1	115	115
	CA60	4	8.0	1	115	115
	CA60	5	8.0	2	631	1262
V2-L2	CA60	1	5.0	41	67	2747
	CA60	2	5.0	2	527	1054
	CA60	3	8.0	2	542	1084
	CA60	1	5.0	67	67	4489
	CA60	2	8.0	4	853	3412
V3-L1	CA60	1	5.0	13	67	871
	CA60	2	8.0	2	193	386
	CA60	3	8.0	2	208	416
V4-L1	CA60	1	5.0	8	67	536
	CA60	2	8.0	2	122	244
	CA60	3	8.0	2	130	260
V5-L1	CA60	1	5.0	82	67	5494
	CA60	2	8.0	2	276	552
	CA60	3	8.0	2	1032	2064
	CA60	4	8.0	2	661	1322
	CA60	5	8.0	2	130	260
V6-L1	CA60	1	5.0	9	67	603
	CA60	2	8.0	4	142	568
V7-L1	CA60	1	5.0	9	67	603
	CA60	2	8.0	2	145	290
	CA60	3	8.0	2	159	318
V8-L1	CA60	1	5.0	35	67	2345
	CA60	2	8.0	4	464	1856
V9-L1	CA60	1	5.0	54	67	3618
	CA60	2	8.0	4	704	2816
V10-L1	CA60	1	5.0	8	67	536
	CA60	2	8.0	2	139	278
	CA60	3	8.0	2	154	308
V11-L1	CA60	1	5.0	21	67	1407
	CA60	2	8.0	2	281	562
	CA60	3	8.0	2	289	578
V12-L1	CA60	1	5.0	18	67	1206
	CA60	2	8.0	2	247	494
	CA60	3	8.0	2	269	538
V13-L1	CA60	1	5.0	28	67	1876
	CA60	2	8.0	2	359	718
	CA60	3	8.0	2	375	750

RESUMO DO AÇO			
AÇO	DIAM (mm)	C.TOTAL (m)	PESO + 10% (kg)
CA50	6.3	204.5	55
	8.0	249.5	108.3
	10.0	102.2	89.3
CA60	5.0	470.2	79.7
PESO TOTAL (kg)			
CA50		232.7	
CA60		79.7	

Volume de concreto (C-25) = 4.78 m³
Área de forma = 67.92 m²



Obra	Revitalização da Praça dos Pioneiros		
Local	Avenida Brasil, Centro - Capanema/PR		
Proprietário	Prefeitura Municipal de Capanema		
Título	PROJETO ESTRUTURAL		
Referência	Área de intervenção	6525,00 m ²	Francho
- Detalhamento Sapatas e Vigas	Data	ABRIL / 2022	01/03
	Escola	Indicada	
Resp.p / projeto:	Representante Tomador:		
Erik Takashi Kurogi	Prefeitura Municipal de Capanema		